



MICHIGAN SPEECH LANGUAGE HEARING
ASSOCIATION

November / December 2024

Newsletter

Vol. 50, Number 5



In this Edition

- From the President
- Advocacy & Legislative Updates
- Member Updates & Ask MSHA Feature
- Annual Conference
- MSHA Committee Update
- MSHF Donation Campaign

From the President

Greetings MSHA!

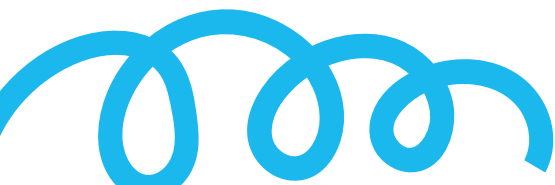
The year 2024 is coming to an end. Reflecting on this year, I am so grateful to the Executive Board and Advisory Assembly for their dedication to MSHA by volunteering their time and talents to meet the needs of our association and our members. These volunteer efforts have allowed MSHA to advocate for our profession, develop practice resources for clinicians, provide you with continuing education opportunities, and identify added member benefits for you.

As we prepare to transition into 2025, I encourage you to take a moment and reflect on this past year, both personally and professionally, and identify areas of growth that you have experienced and areas that you would like to devote more attention to. What have you learned about yourself as an individual and as a professional? What modifications do you want to make to continue to grow personally and professionally?

Thank you for supporting MSHA with your membership and presence at our events. I hope to see you at our 2025 Annual Conference in Kalamazoo, MI. If you are planning to attend, consider bringing a friend or two with you.

Best,

Dr. Rosalyn Davis, Ph.D., CCC-SLP



Advocacy & Legislative Updates

ASHA and MSHA Secure \$5.5 million for Michigan SLPs

October 1, 2024

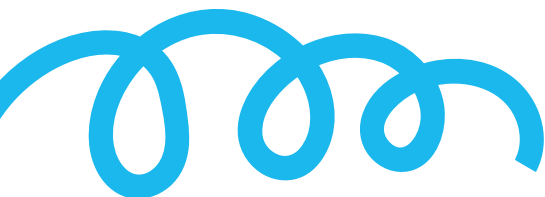
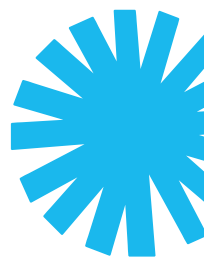
Advocacy Win! As a result of ASHA and Michigan Speech Language Hearing Association (MSHA) advocacy, the Michigan legislature appropriated a \$5.5 million increase for speech-language pathology codes in 2025, resulting in a 23% rate increase across all codes for which we requested increases. The payment increase will apply to services provided in private practices, nursing facilities, or outpatient facilities (including hospitals, rehabilitation agencies, and CORFs/CARFs).

ASHA Advocacy worked closely with Michigan's State Advocate for Reimbursement, Julie Pratt, and MSHA's state level lobbyist to demonstrate the need for this increase through an ASHA/MSHA survey of Michigan-based ASHA members regarding reimbursement trends and payment challenges. We met with Michigan legislature representatives and staff from Michigan's Department of Health and Human Services (MDHHS)—relationships fostered from previous ASHA Payer Summits and many meetings—to smoothly facilitate this victory. We anticipate and appreciate continued collaboration from MDHHS through the implementation phase.

Questions? Reach out to MSHA at info@mislha.org or ASHA at reimbursement@asha.org

MDHHS Updates Medicaid Policy to Remove CCC Requirement

MSHA received word that effective November 1, 2024, MDHHS is updating Medicaid policy to remove the CCC requirement for SLPs across all settings. Please click the link [Advocacy | MSHA](#) for more information or with any questions you may have please email info@mislha.org.



Member Updates

Have a member update to share or question you need an answer to?

We want to hear from you!

Contact us at info@mislha.org to share in our newsletter and on social media!



**2025 MEMBERSHIP
RENEWAL
INVOICES
HAVE BEEN SENT**

Out!

IF YOU DID NOT RECEIVE ONE AND SHOULD HAVE,
PLEASE EMAIL NICHOLE AT
info@mislha.org

Ask MSHA!

*"I am currently a SLP who needs to take a leave of absence for personal reasons.
I'm concerned about my license and continuing education.
Are you able to provide some guidance?"*

Thank you for the inquiry! Our board members have had great success calling LARA. Here is a direct number for you. 517-241-0199 (press option 1).

Based on the information provided, you would still need to maintain your continuing education requirement for relicensing. The simpler option would be to maintain your license, although you would take a break from clinical practice. There are several options for free virtual CE courses that would allow you to "multitask" if need be, without the added burden of worrying about your license.



Specific topics desired include:

- Traumatic Brain Injury & Language Functioning
- Hearing Loss & Language
- Cognitive Rehabilitation
- Laryngectomy Rehabilitation
- Speech Language Pathology and AI
- Treatment with 0-5 Population
- Phonemic Awareness
- Dysphagia

Deadline is December 2nd or until the conference agenda is full!

Annual Conference

MSHA ANNUAL CONFERENCE



Registration opens

Monday, November 18th

Click the link below for more information

[Registration | MSHA](#)

Save the Dates

2026 Conference

March 18 - 19, 2026

Motor City Casino & Hotel, Detroit

2027 Conference

April 8 - April 10, 2027

Lansing Center, Lansing

From our SLP Public Schools Committee

Dyslexia Legislation Passes in Michigan

Did you know that Michigan became one of the final states to pass dyslexia legislation when Governor Whitmore signed the bills into law on Oct 10, 2024? While some of the requirements will be the same or very similar to our Read By Grade 3 legislation, there will be some important differences around tools for universal screening, and interventions must be grounded in evidence-based structured literacy methods.

Here are 3 things school SLPs will want to know:

- While the bills that passed and were signed into law (Senate Bills 567 and 568) are referred to as “dyslexia legislation,” their main impact will be on K-12 general education systems of core instruction, assessment, and curriculum.
- General education Individual Reading Improvement Plans (IRIPs) will continue to be used to document support to kiddos needing additional instruction, so grounding any prevention and MTSS supports for speech and language within an existing IRIP may be a smart strategy to advocate for your SLP role and collaborate with general education.
- The MDE's Dyslexia Handbook is an excellent resource for general and special educators to understand the word recognition and decoding difficulties that are the hallmark of dyslexia.

Contact Us

201 Townsend Street, Suite 900 | Lansing, MI 48933 | 517.374.9134

General Inquiries: info@mislha.org

Conference Inquiries: conference@mislha.org

CE-Related Inquiries: CEAdmin@mislha.org

Executive Board & Advisory Assembly

Follow Us on Social Media





ADVANCING THE STUDY
OF COMMUNICATION DISORDERS

MSHF, Michigan Speech-Language-Hearing Foundation

Established in 2006 as a 501 (c)(3) corporation, the MSHFoundation has distributed more than \$32,000 in scholarships to over 80 deserving students with your help.

Please consider contributing to our new "SAINTS" Development Fund, a ten-year fundraising initiative which culminates at MSHF's 25th anniversary in 2031. We are looking for at least 100 donors to give a total of \$1000 each by 2031. Donate \$1,000 all at once or at your own pace over the next seven years.

Won't you become a SAINT (i.e., Speech-Language Pathologists, Audiologists and Friends Investing in the Next Generation of Therapists and Scholars)?

Please consider giving back to your profession. All donations are appreciated!

Make A Tax-Deductible Donation

I would like to support the MSHF's 2024 Annual Giving Campaign

☐ \$25 ☐ \$50 ☐ \$100 ☐ \$250 ☐ \$500 ☐ Other

Add me to your SAINTS Fundraising Campaign

☐ I will pledge \$100 per year for ten years

☐ I will pledge \$200 per year for 5 years

☐ Other

Please accept my donation in honor of or in memory of:

_____ Please provide name(s) + address(es)

I am making my gift(s) by:

☐ Check (payable to MSHFoundation) or ☐ VISA ☐ Mastercard

Name: _____

Card # _____

Address: _____

Expiration Date: ____/____/____

City: _____

Code: _____

Phone: _____

Signature: _____

Email: _____

Mail donation information to: MSHF 755 W. Big Beaver Rd. Suite 2020 Troy, MI 48084.

Donations may also be made online at: www//msha-foundation.org