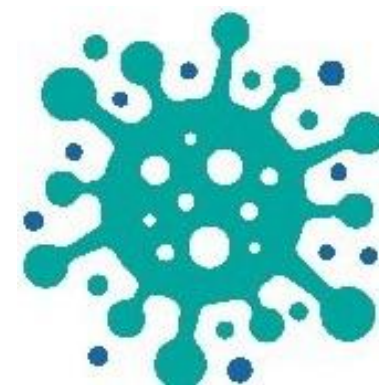


**THE MSHA HEALTHCARE COMMITTEE PRESENTS:**  
**MANAGEMENT OF COGNITIVE-COMMUNICATION  
DISORDERS IN POST-COVID-19 PATIENTS**



Rebecca Boersma, M.A., CCC-SLP Speech-  
Language Pathologist  
George Washington University Hospital Outpatient  
Rehabilitation Center  
Calvin University Alumnus

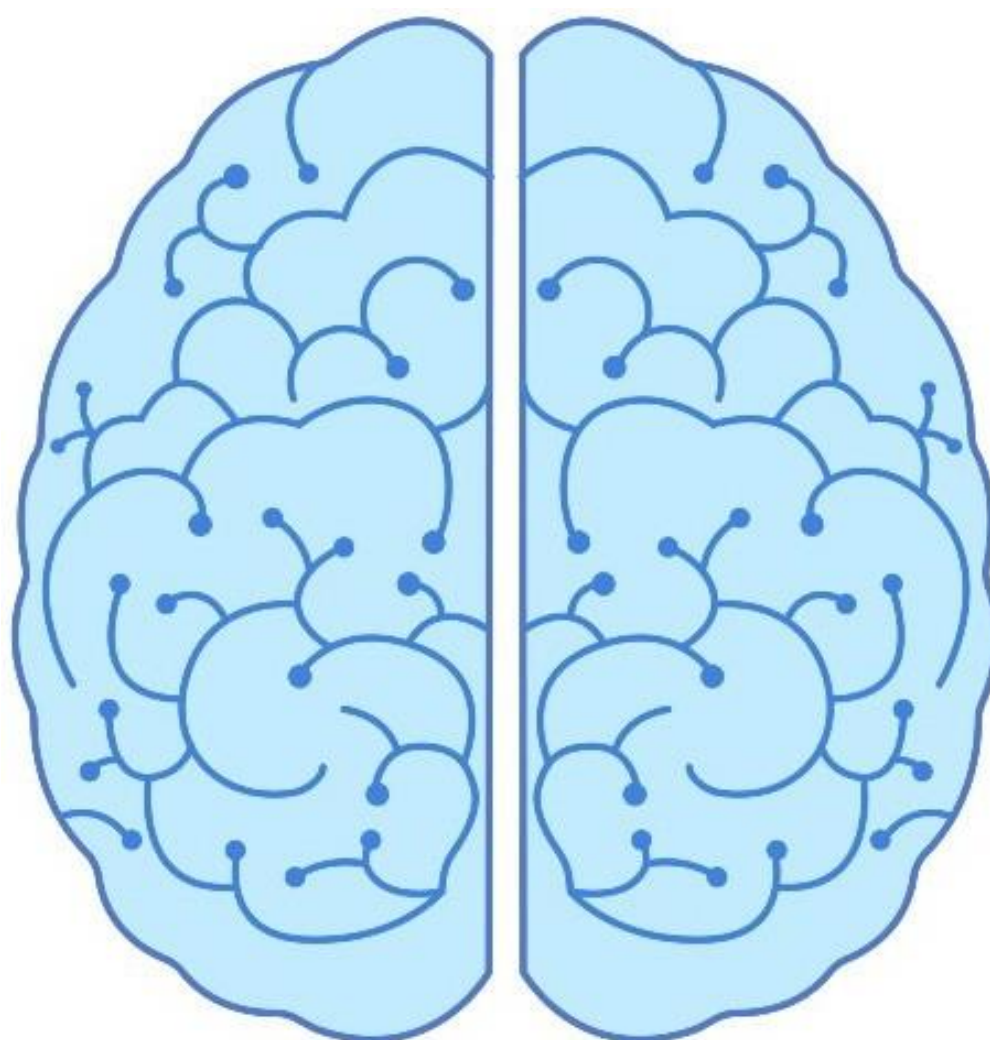


*Relevant Financial Disclosures: None Non-Financial Disclosures: None*

*Learning Outcomes:*

- Identify emerging evidence regarding COVID-19 and Neurological manifestations*
- Identify key interdisciplinary team members to help optimize patient outcomes*
- Recognize the typical symptoms associated with post-COVID-19 syndrome, and implement evaluation and treatment approaches*

**WEDNESDAY, OCTOBER 19, 2022**  
**5:30-7PM**  
**LOREM IPSUM ..**  
**VIA ZOOM ..**



**MSHA MEMBER \$25**  
**NON-MSHA MEMBER \$50**  
**STUDENTS \$15**

Register online at [www.michiganspeechhearing.org](http://www.michiganspeechhearing.org) Questions? Contact the MSHA Office at:  
[msha@att.net](mailto:msha@att.net) or at (517.332-5691)



**ASHA CE**  
**APPROVED PROVIDER**

Michigan Speech-Language-Hearing Association  
.15 ASHA CEUs  
Intermediate Level