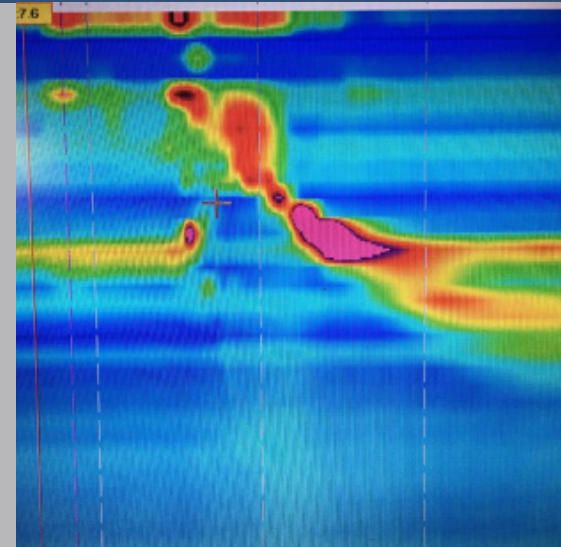
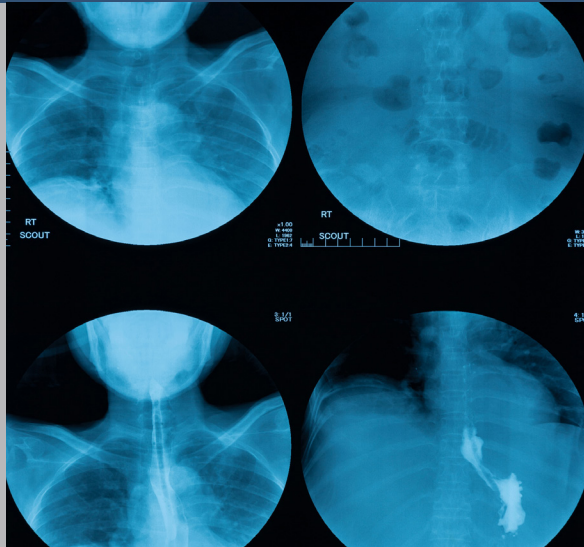




DYSPHAGIA CONFERENCE

MULTIDISCIPLINARY MANAGEMENT OF COMPLEX DYSPHAGIA



WHAT IS IT?

This one-and-a-half day conference is focused on the multidisciplinary approach to management of complex pharyngeal and esophageal dysphagia. Speakers representing the disciplines of Speech-Language Pathology, Laryngology, Head and Neck Surgery, Gastroenterology, and Behavioral Health Psychology will present on contemporary practice, with an emphasis on a collaborative approach. Speakers will include an outstanding group of Michigan Medicine faculty, as well as guest speakers.

WHEN?

Date:

Friday, May 12 - Saturday, May 13

Time:

1 - 5 PM, Friday, May 12

8 - 4:30 PM, Saturday, May 13

Place:

Palmer Commons Event Center, Forum Hall
University of Michigan
100 Washtenaw Avenue
Ann Arbor, MI 48108



SPEAKERS INCLUDE:

- Mahmoud Al-Hawary, MD, *Michigan Medicine*
- Joan Chen, MD, MS, *Michigan Medicine*
- Molly Knigge, MS, CCC-SLP, BCS-S, *University of Wisconsin*
- Robbi A. Kupfer, MD, *Michigan Medicine*
- Timothy McCulloch, MD, *University of Wisconsin*
- Joseph Murray, Ph.D., CCC-SLP, BCS-S, *VA Ann Arbor*
- Mark Prince, MD, *Michigan Medicine*
- Megan Riehl, Psy.D., *Michigan Medicine*
- Sarah Russell, MS, CCC-SLP, BCS-S *Michigan Medicine*
- Margaret K. Tiner, MS, CCC-SLP, BCS-S, *Michigan Medicine*

Speakers have provided disclosures regarding relevant financial and non-financial relationships. Please see registration website for full list here: <http://bit.do/um dysphagia>

Questions? Contact Margaret Tiner at MKTINER@MED.UMICH.EDU

REGISTER ONLINE

Two Day Course Fees

Physicians	\$175
Speech-Language Pathologists	\$150
U-M Speech-Language Pathologists	\$40
Trainee (Residents or SLPs)	\$25



To register, or for more information, please visit:
<http://bit.do/um dysphagia>.

Course Objectives:

At the conclusion of this conference, participants will be able to implement:

1. Multidisciplinary care and appropriate instrumental exams for evaluation of dysphagia
2. Appropriate use of high resolution manometry in dysphagia cases
3. Appropriate therapeutic and surgical management of complex dysphagia

Continuing Education

Physicians

The University of Michigan Medical School is accredited by the Accreditation Council for Continuing Medical Education (ACCME) to provide continuing medical education for physicians. The University of Michigan Medical School designates this live activity for a maximum of 10 *AMA PRA Category 1 Credit(s)*TM. Physicians should claim only the credit commensurate with the extent of their participation in the activity.

Speech-Language Pathologists

This program is offered for up to 1.05 ASHA Continuing Education Units (intermediate level, professional area).



The Michigan Speech-Language-Hearing Association is approved by the Continuing Education Board of the American Speech-Language-Hearing Association (ASHA) to provide continuing education activities in

speech-language pathology and audiology. See course information for number of ASHA CEUs, instructional level and content area. ASHA CE Provider approval does not imply endorsement of course content, specific products or clinical procedures.

MULTIDISCIPLINARY MANAGEMENT OF COMPLEX DYSPHAGIA

Target Audience

Speech-Language Pathologists, Otolaryngologists, Gastroenterologists, nursing and any professional involved in the care of complex dysphagia.

FRIDAY 5/12/17

12:00 - 1:00	Registration	2:45 - 3:15	Radiologist's Evaluation (M. Al-Hawary)
1:00 - 1:10	Opening Remarks		
1:10 - 1:30	Michigan Multidisciplinary Clinic	3:15 - 3:45	Dysphagia Management in the Critical Care Patient (S. Russell)
1:30 - 2:30	VFSS, FEES, Esophageal Screen (J. Murray)	3:45 - 4:45	SLP Complex Cases (M. Knigge)
2:30 - 2:45	Break	4:45 - 5:00	Questions and Wrap-Up

SATURDAY 5/13/17

7:30 - 8:00	Registration and Continental Breakfast	12:00 - 1:15	Lunch
8:00 - 8:15	Opening Remarks	1:15 - 1:40	Making Sense of Globus (R. Kupfer)
8:15 - 8:45	GI Evaluation (J. Chen)	1:40 - 2:30	GI Psychology (M. Riehl)
8:45 - 9:30	Pharyngeal Manometry (T. McCulloch)	2:30 - 2:50	SLP in the Laryngology Clinic: Muscle Tension Dysphagia, Globus and VF Paralysis (M. Tiner)
9:30 - 10:15	Surgical Management (T. McCulloch)	2:50 - 3:05	Break
10:15 - 10:30	Break	3:05 - 4:05	SLP & Manometry: Treatment and Biofeedback (M. Knigge)
10:30 - 10:50	Laryngology Perspective and Management of Zenker's (R. Kupfer)	4:05 - 4:30	Questions and Wrap-Up
10:50 - 11:30	SLP and Pharyngeal Manometry (M. Knigge)		
11:30 - 12:00	Case Presentations (Kupfer, Prince, McCulloch, Knigge, Chen)		

Hotel Accommodations

A block of rooms has been reserved at the Kensington Hotel in Ann Arbor for a conference rate of \$124 per night, if booked by April 12.

Call (734) 761-7800 to book your room. Let reception know you're with the Michigan Medicine Dysphagia Conference.

Kensington Hotel
3500 S. State Street
Ann Arbor, MI 48108
www.kcourtaa.com

Course Directors

Margaret Tiner, MS, CCC-SLP, BCS-S

Speech-Language Pathologist, Sr.
Head/Neck Clinical Lead
Departments of Otolaryngology and
Speech-Language Pathology

Robbi A. Kupfer, MD

Assistant Professor
Department of Otolaryngology-Head and
Neck Surgery